

14. EEx certified switches
14.1 Safety switches
14.1.6 Emergency Stop and push buttons



Application Explosion proof command devices are mounted in EEx switchboards, control panels, two-hand control panels and in lift manufacture. On manual actuation, the devices starts operating sequences and functional processes or terminate these.

There are versions as push buttons, semi-rotary, key-operated and Emergency Stop switches. The Emergency Stop devices are connected in the safety circuit of a machine or plant. They fulfill the requirements of EN 60204-1.

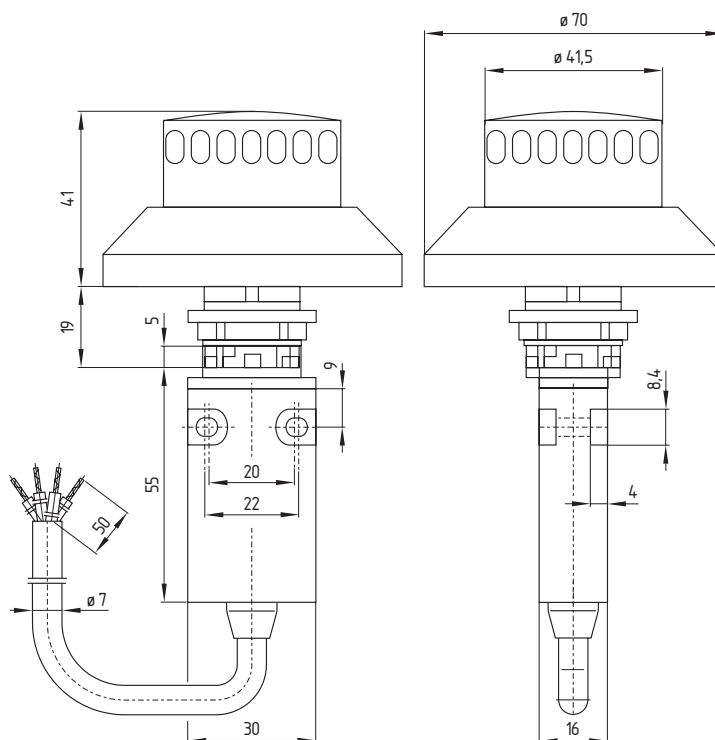
Design and mode of operation These explosion proof command devices fit in Ø 22.5 mm mounting holes and are suitable for spacings of 30 mm between centres. All actuators provide IP 65 and the devices are double insulated to protection class II. The actuator is connected by a bayonet fastener to the EX/EXM 14 switch. Switching elements are available with snap or slow action.

- Features EX/EXM 14**
- 2 contacts
 - Thermoplastic enclosure
 - Compact design
 - Pre-wired cable
 - EX: slow action
 - 1 NO and 1 NC contact
 - EXM: snap action
 - change-over contact, single break
 - Actuators:
 - Emergency Stop push buttons
 - Push buttons with/without diaphragm
 - Selector switches
 - Control switches, spring return
 - Selector/control switches
 - Key-operated switches

Note Further technical characteristics and ordering details for these command devices are to be found in **chapter 6.2**.

Technical data are shown in tabular form in chapter 14.1.6.3.

14. EEx certified switches
14.1 Safety switches
14.1.6 Emergency Stop and push buttons
14.1.6.1 EX 14 RUV range

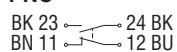


Features

- Thermoplastic actuator
- To EN 418
- 1 NC and 1 NO contact
- Projection from front of panel 41 mm
- Mounting hole \varnothing 22.5 mm
- With collar to prevent blocking
- Reset by turning clockwise
- With pressure-point to protect against unintentional actuation
- Pre-wired cable
- Clip-in actuator

**Contacts/
Switch travel**

**1 NO
1 NC**



Slow action

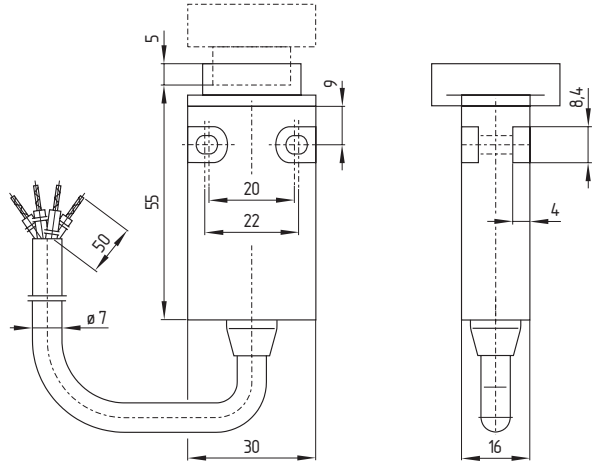
EEx version

EX 14 RUV

Cable length

- Cable length 1 m
- Other lengths on enquiry

14. EEx certified switches
14.1 Safety switches
14.1.6 Emergency Stop and push buttons
14.1.6.2 EX/EXM 14 range



Features

- Thermoplastic enclosure
- Slow action \ominus with 1 NC and 1 NO contact
- Snap action with change-over contact, single break
- Pre-wired cable
- Clip-in actuator

Cable length

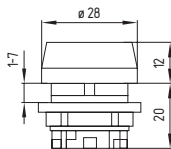
- Cable length 1 m
- Other lengths on enquiry

Note

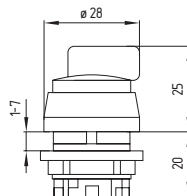
A detailed description of the actuators as well as the contacts and switch travel diagrams can be found in chapter 6.2.5.

Actuators

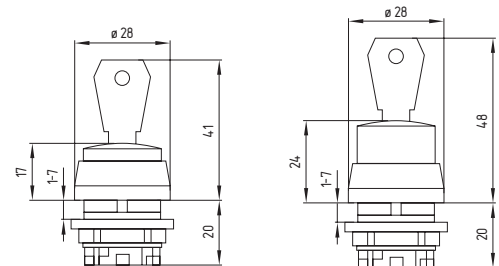
push button
RT and RTM



selector and control switch
RW and RST



key actuator
RSSA



14. EEx certified switches
14.1 Safety switches
14.1.6 Emergency Stop and push buttons
14.1.6.3 Technical data



	EX 14 RUV EX 14	EXM 14
Standards:	IEC/EN 60947-5-1	
EEx identification:	EEx d IIC T6	
Certification:	PTB-No. Ex-93.C.1011.X	PTB-No. Ex-93.C.1012.X
Enclosure:	Thermoplastic, self-extinguishing UL 94-VO	
Protection class:	IP 67 to IEC/EN 60529	
Contact material:	Silver	
Contact type:	Change-over contact, double break galvanically separated contact bridges	Change-over contact, single break,
Switching system:	Slow action NC contacts with positive break ⊖	Snap action
Termination:	H 05VV-F 4 x 0.75 mm ²	H05VV-F 3 x 0.75 mm ²
Rated impulse		
withstand voltage U _{imp} :	4 kV	
Rated insulation voltage U _i :	250 V	
Thermal test current I _{th} :	6 A	5 A
Utilisation category:	AC-15; DC-13	
Rated operating		
current/voltage I _e /U _e :	6 A/250 VAC; 0.25 A/230 VDC	5 A/250 VAC; 0.16 A/230 VDC
Max. fuse rating:	6 A	5 A
Ambient temperature:	- 25 °C ... + 65 °C	
Mechanical life:	5 million operations	1 million operations
Switching frequency:	1800/h	
Repeat operation accuracy:	± 0.1 mm	± 0.02 mm
Resistance to shock:	50 g / 6 ms	

